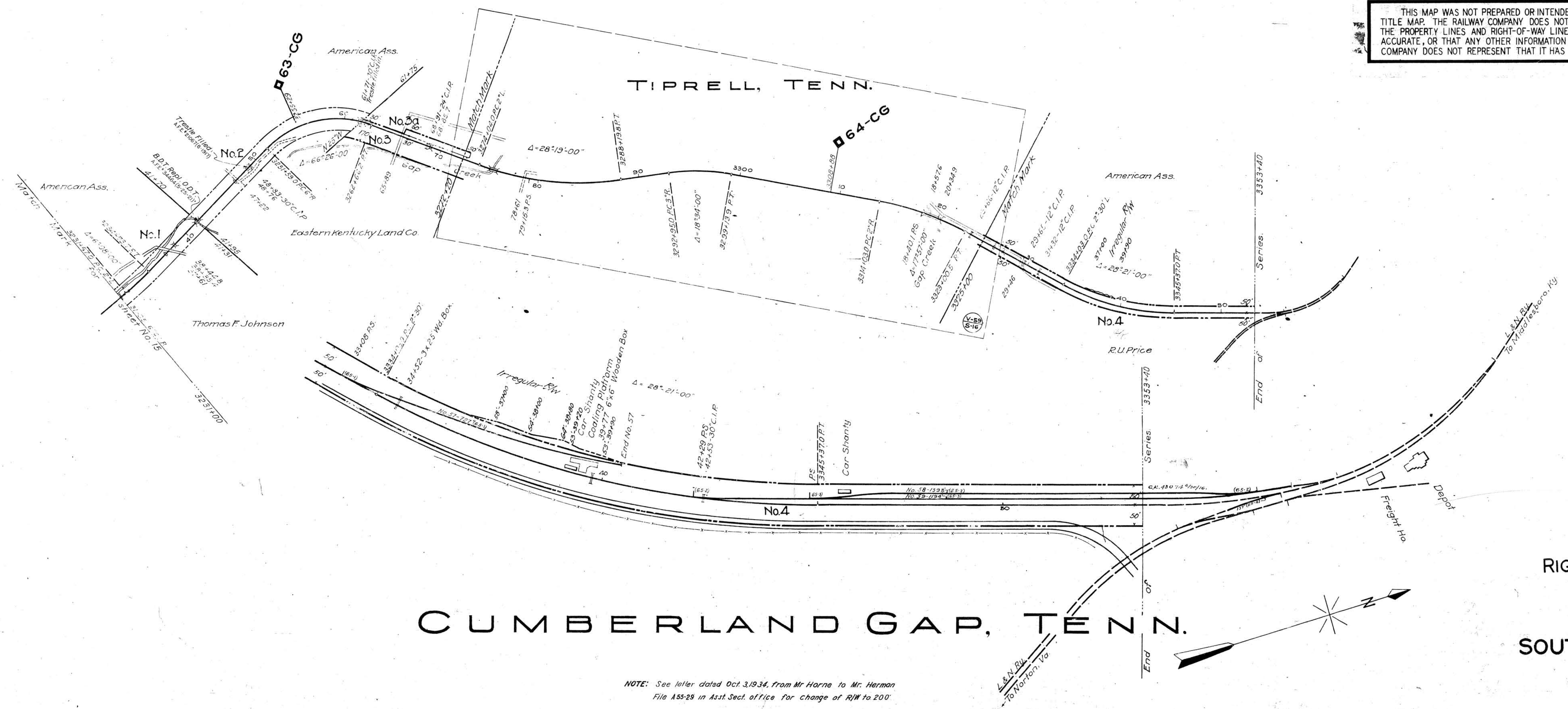


CLAIBORNE COUNTY, TENN.

THIS MAP WAS NOT PREPARED OR INTENDED FOR USE AS A REAL ESTATE TITLE MAP. THE RAILWAY COMPANY DOES NOT REPRESENT OR SUGGEST THAT THE PROPERTY LINES AND RIGHT-OF-WAY LINES SHOWN ON THE MAP ARE ACCURATE, OR THAT ANY OTHER INFORMATION ON THE MAP IS CORRECT. THE COMPANY DOES NOT REPRESENT THAT IT HAS CHECKED THIS MAP FOR ACCURACY.



CUMBERLAND GAP, TENN.

NOTE: See letter dated Oct. 3, 1934, from Mr. Horne to Mr. Herman File 155-29 in Asst. Sect. office for change of R/W to 200'

TRACK NOS. REFER TO I.C.C. LIST NOS.  
**RIGHT-OF-WAY AND TRACK MAP**  
**SOUTHERN RAILWAY COMPANY**  
 Operated by the  
**SOUTHERN RAILWAY COMPANY**  
 COSTER DIVISION  
 STATION 3231+00 TO STATION 3353+40  
 SCALE 1 IN. = 400 FT. DECEMBER 31, 1927

013-028

Office of Special Engineer  
 Washington, D.C.

V.59  
 16

STATIONING REFERS TO I.C.C. INVENTORY CHAINAGE 1916

Tracks corrected to Dec. 31, 1936