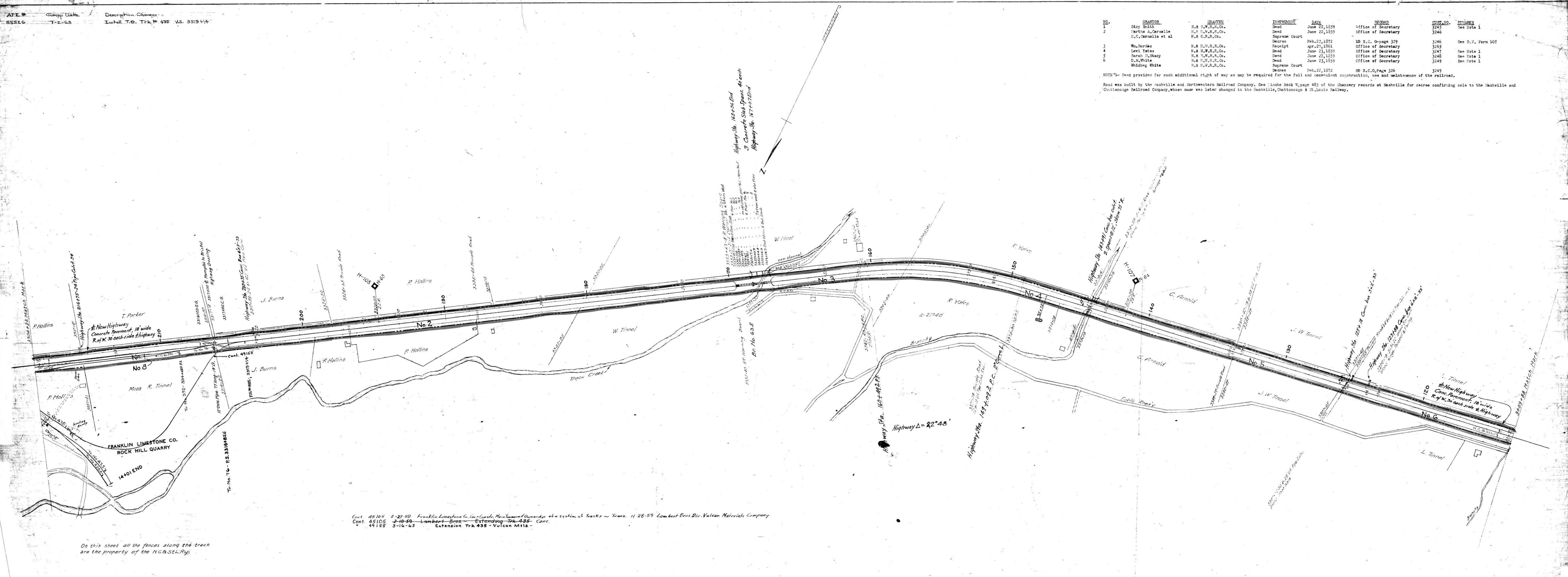


NO.	GRANTOR	GRATTEE	INSTRUMENT	DATE	RECORD	CURT. NO.	REMARKS
1	Daly Smith	N.A. N.W.R.R. Co.	Deed	June 22, 1859	Office of Secretary	3245	See Note 1
2	Martha A. Cernalle M.C. Cernalle et al	N.A. N.W.R.R. Co. N.A. C.R.R. Co.	Deed Supreme Court	June 22, 1859	Office of Secretary	3246	See Note 1
3	Wm. Burnes	N.A. N.W.R.R. Co.	Deed	Feb. 22, 1872	MS S.C. Page 329	3246	See D.V. Form 107
4	Levi Yates	N.A. N.W.R.R. Co.	Receipt	Apr. 27, 1861	Office of Secretary	3245	See Note 1
5	Sarah H. Stacy	N.A. N.W.R.R. Co.	Deed	June 23, 1859	Office of Secretary	3247	See Note 1
6	D.H. White	N.A. N.W.R.R. Co.	Deed	June 23, 1859	Office of Secretary	3248	See Note 1
	Whidbey White	N.A. N.W.R.R. Co.	Supreme Court		Office of Secretary	3249	See Note 1
			Deed	Feb. 22, 1872	MS S.C. Page 326	3249	

NOTE: Deed provides for such additional right of way as may be required for the full and convenient construction, use and maintenance of the railroad.

Road was built by the Nashville and Northwestern Railroad Company. See Minute Book W, page 485 of the Chancery records at Nashville for decree confirming sale to the Nashville and Chattanooga Railroad Company, whose name was later changed to the Nashville, Chattanooga & St. Louis Railway.



Cont. 45105 2-27-59 Franklin Limestone Co. (Const. Maint. & Ownership of a system of tracks - Trans. 11 28-59 Lambert Bros. Div. Vulcan Materials Company
 Cont. 45105 2-10-59 Lambert Bros. - Extending Trk 435 - Conc.
 49155 3-16-63 Extension Trk 435 - Vulcan Mtl. Co.

RIGHT-OF-WAY AND TRACK MAP
 NASHVILLE, CHATTANOOGA AND ST. LOUIS RY.

NASHVILLE DIVISION

STATION 3304+28 TO STATION 3409+88
 SCALE, 1 IN. = 200 FT. JUNE 30, 1916

Sheet No 31 of 37 Sheets of
 Nashville Div. Main Line from
 survey station 3304+28 to
 survey station 3409+88

Office of Chief Engineer
 Nashville, Tenn.

M.P. 625 to 645

